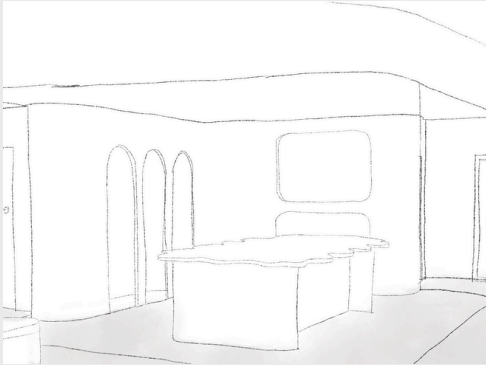


ISABELLE TAVELLA

Interior Designer



BEAUMONT TILES ENOGGERA

PROJECT

Commercial retail refurbishment and fit-out

LOCATION

Enoggera, QLD 4051

PRE-DESIGN CONDITION

Beaumont Tiles Enoggera is a retail showroom located in a building complex built in 2019. The existing showroom has the original fit-out.

CONCEPT & FEATURES

Beaumont Tiles Enoggera, Queensland, features a 670m² showroom and warehouse reimagined to express the elegance of natural materials and the brand's signature red hues.

The sculptural point-of-sale zone, defined by scalloped forms and a rendered backdrop, evokes warmth and connection through its organic curves. A digital media hub with an immersive VR simulator enhances the customer journey, allowing clients to visualise their spaces before renovation.

A cohesive palette of warm timbers, soft neutrals, natural stone, and deep reds creates a tactile, serene environment celebrating the beauty of nature's raw forms.

SOFTWARE

SketchUp
V-Ray
Photoshop
Canva
Procreate (hand sketches)

3D VISUALISATIONS

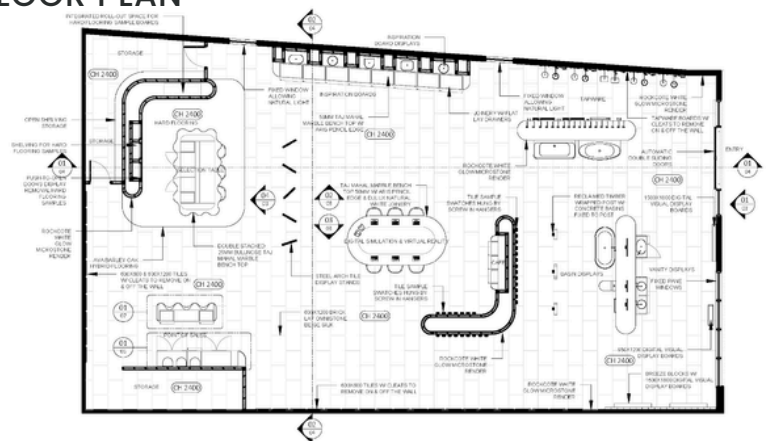


Point-of-Sale Desk

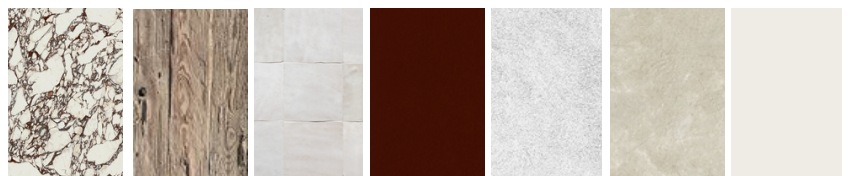


Cafe

FLOOR PLAN



MATERIALS



Calacatta Viola
Marble / Marble Hub

Reclaimed Timber / Reclaimed Sleepers

Arabian Sand gloss / Perini

Kalamata / Laminex

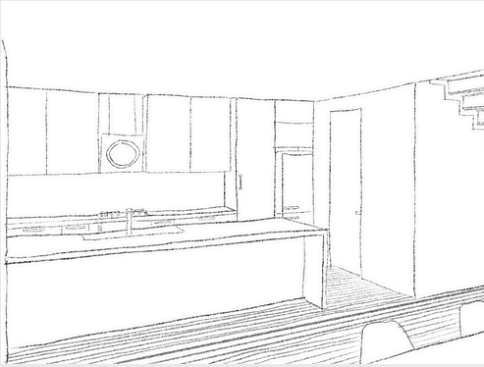
Microstone / Rockcote

Omnistone Beige / Beaumont Tiles

Natural White / Dulux

ISABELLE TAVELLA

Interior Designer



BELLAGIO APARTMENT

PROJECT

Refurbishment of existing apartment

LOCATION

Wentworth Point, NSW 2127

PRE-DESIGN CONDITION

Located in The Bellagio Apartments, an eight-storey multi-residential building built in 2005. The existing apartment is a two-storey penthouse apartment overlooking the Parramatta River.

CONCEPT & FEATURES

Marion and Will Baker's love of travel, outdoor living, and the arts inspired a palette of warm neutrals, tactile materials, and seamless indoor-outdoor connections. Natural finishes anchor the home to its surrounding wetlands, parklands, and the tranquillity of the Parramatta River.

The lower level features an open-plan layout centred on a sculptural staircase of steel, timber, and glass, enhancing openness and flow.

At the heart of the residence, the kitchen pairs warm timber, muted greens, and natural stone with finely crafted joinery and premium fittings, uniting refined functionality with architectural integrity.

SOFTWARE

Revit
V-Ray
Photoshop
Canva
Procreate (hand sketches)

3D VISUALISATIONS

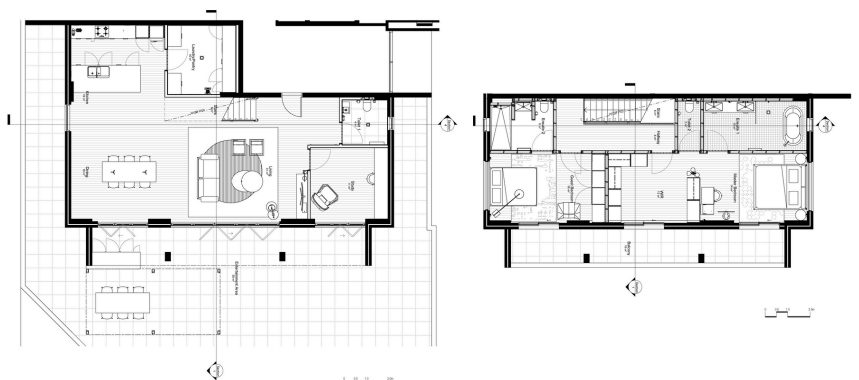


Living



Kitchen

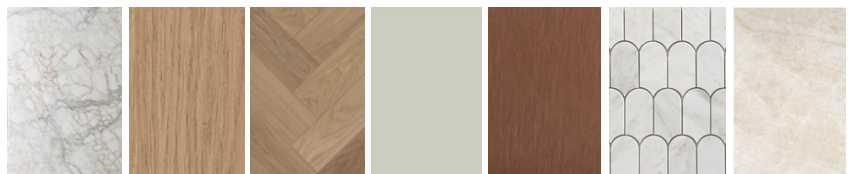
FLOOR PLAN



Level 5

Level 6

MATERIALS



PMattina
Oro marble
/ CDK
Stone

Boston
Oak /
Polytec

Amazon
Prime HB /
Havwoods

Verdelho
smooth /
Polytec

Lustre
Bronze /
Meir

Arch
Carrara C /
Di Lorenzo

Cavare Taj
/ Perini

ISABELLE TAVELLA

Interior Designer



BLUES POINT APARTMENT

PROJECT

Multi-level apartment refurbishment

LOCATION

McMahons Point, NSW 2060

PRE-DESIGN CONDITION

Originally designed by Harry Seidler and completed in 1962, Blues Point stands as a 24-storey apartment building that embodies the essence of mid-20th-century residential design.

CONCEPT & FEATURES

Blues Point reinterprets modern multi-residential living across levels 63 and 64, transforming the apartment's angular geometry into spacious zones that balance public and private realms.

Level 63 features an open-plan living area centred around a sculptural staircase. A generous kitchen with walnut timber, a champagne rangehood and natural stone surfaces serves as both dining and social hub, while curved recesses and custom displays add softness and warmth.

Level 64 defines the private retreat, where a tranquil sitting area and open-plan bedroom with ensuite embrace harbour views. Natural stone, tactile tiles and soft furnishings create a serene, restorative atmosphere.

SOFTWARE

Revit
V-Ray
Photoshop
Canva
Procreate (hand sketches)

3D VISUALISATIONS



Kitchen



Master Bedroom

FLOOR PLAN

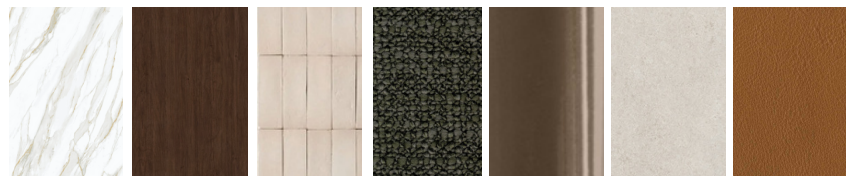


Level 63



Level 64

MATERIALS



Calcatta Gold / ACStone

Jamaican Walnut / Polytec

Noosa zellige taupe / Tilecloud

Flaming muschino / Minnotti

Lustre Bronze / Meir

Sensi Fossil / Beaumont Tiles

Leather Caramel / Minnotti

ISABELLE TAVELLA

Interior Designer



MNEMOSYNE SERVICED APARTMENTS

PROJECT

Multi-residential fit-out

LOCATION

Edgecliff, NSW 2027

PRE-DESIGN CONDITION

A new multi-storey development, designed for serviced apartments that accommodate short-term and medium-term stays. With no previous fit-outs, the apartments provide the opportunity to create a new, functional but refined interior.

CONCEPT & FEATURES

Mnemosyne, located in Edgecliff, Sydney, is envisioned as a sanctuary for relaxation and renewal. The 40-storey sculptural development blends contemporary living with an atmosphere of calm, featuring serviced apartments arranged for flexible layouts, a wellbeing hub, and commercial amenities.

The interiors reinterpret classic detailing through a modern lens—wainscoting, custom joinery, and natural stone enrich the refined framework, while soft furnishings and sheer curtains create warmth and serenity. Overlooking Sydney's coastline, Mnemosyne offers a luxurious yet restorative environment designed to nurture wellbeing and meaningful connection.

SOFTWARE

SketchUp
V-Ray
Photoshop
Canva
Procreate (hand sketches)

3D VISUALISATIONS



Apartment C Dining



Apartment D Kitchen

FLOOR PLAN



MATERIALS



Taj Mahal
Quartzite /
CDK Stone

European
Walnut /
Polytec

Arabian
Sand gloss
/ Perini

Hastings
sand matt
/ Perini

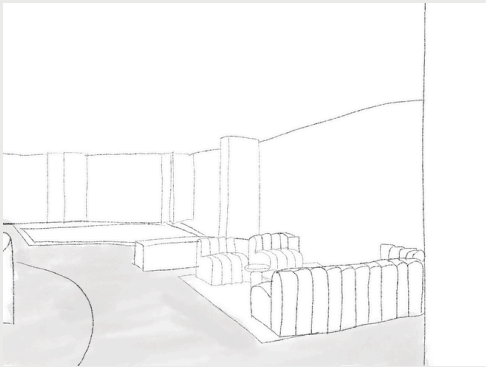
Tiger
Bronze /
Meir

Amazon
Prime HB /
Hawwoods

Beige
Royal Half /
Dulux

ISABELLE TAVELLA

Interior Designer



MNEMOSYNE WELLBEING HUB

PROJECT

Multi-residential wellbeing hub fit out

LOCATION

Edgecliff, NSW 2027

PRE-DESIGN CONDITION

A new multi-storey development, designed for serviced apartments that accommodate short-term and medium-term stays. With no previous fit-outs, the wellbeing hub provides the opportunity to create a new, functional but refined interior for leisure.

CONCEPT & FEATURES

The Mnemosyne Project is a 40-storey sanctuary of restoration and wellness in Edgecliff, Sydney. Blending contemporary living with calm and connection, it features multi-residential serviced apartments, street-level amenities, and a dedicated fifth-floor wellbeing hub.

This restorative level unites quiet and social spaces—from a secluded sitting area and pilates studio to a spa, pool, and bar—designed to support mindfulness and ease. Interiors pair natural stone, organic forms, and expansive glazing to create a warm, light-filled atmosphere.

Mnemosyne stands as a contemporary wellness retreat, harmonising luxury, comfort, and emotion.

SOFTWARE

SketchUp
V-Ray
Photoshop
Canva
Procreate (hand sketches)

3D VISUALISATIONS

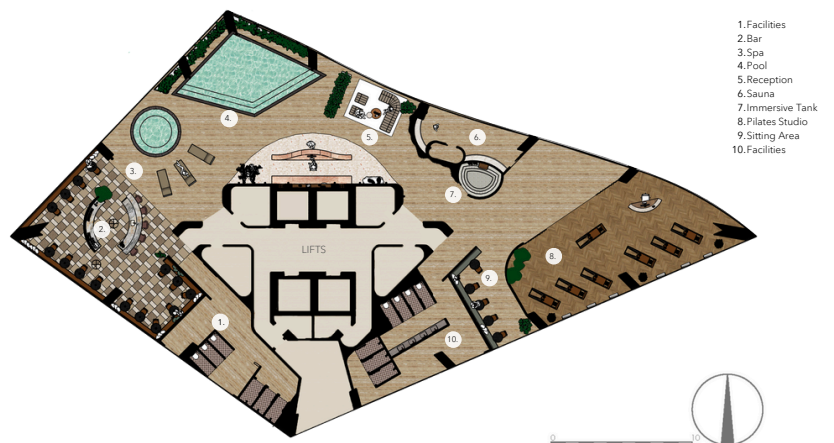


Reception

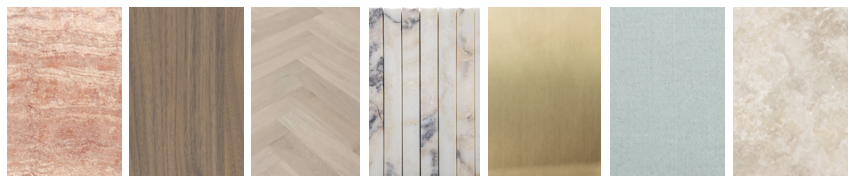


Bar Seating

FLOOR PLAN



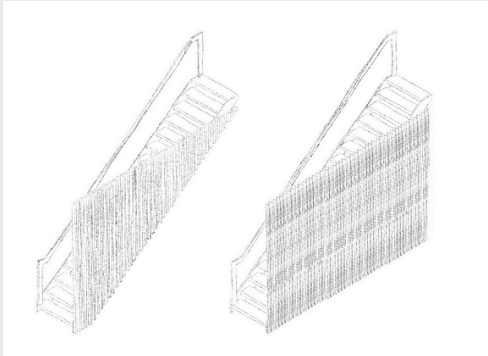
MATERIALS



Pink Travertine / CDK Stone Notaio Walnut / Polytec Tinge Oak HB / Imperial Flooring Colosseum Dorado / Perini Tiger Bronze / Meir Duck Egg Linen Cotton / Maker & Son Ivory Travertine / Haus Collective

ISABELLE TAVELLA

Interior Designer



PADDINGTON TERRACE

PROJECT

Multi-level Terrace House Refurbishment

LOCATION

Paddington, NSW 2021

PRE-DESIGN CONDITION

Paddington Terrace, located in Paddington, NSW, is a heritage-listed multi-level residence with a previous fit-out, offering a layered architectural framework and generous spaces.

CONCEPT & FEATURES

Paddington Terrace emerges as a dialogue between past and present, transforming a heritage residence into a calm, contemporary retreat. Set just east of Sydney's vibrant centre, the four-level home unfolds as a layered composition of history, light, and refined materiality.

The design reimagines the traditional terrace, balancing intimacy with openness. Bespoke living areas and generous bedrooms are shaped with quiet precision, while a palette of muted neutrals and tactile textures brings a gentle, meditative warmth throughout.

A sculptural timber staircase forms the home's central spine, rising beneath a large skylight. Sunlight filters through its vertical battens, casting shifting patterns that animate the interior. This interplay of light and craftsmanship creates a serene continuity across all levels, honouring the home's heritage while embracing renewal.

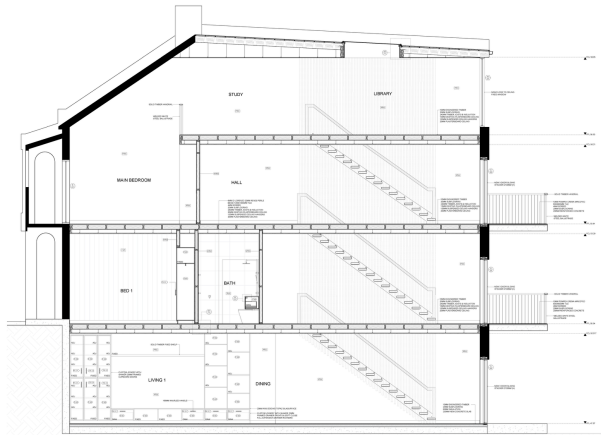
SOFTWARE

AutoCAD

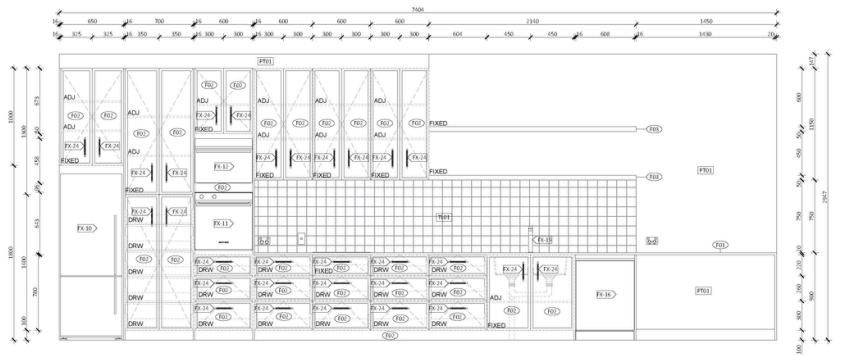
Canva

Procreate (hand sketches)

HIGHLIGHTS



Section

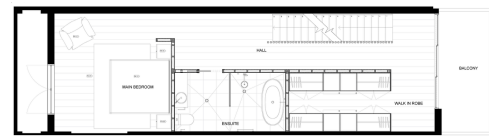


Kitchen Elevation

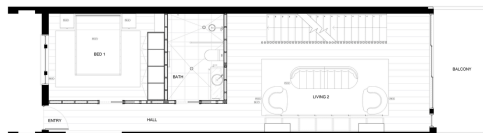
FLOOR PLAN



Basement



First Floor

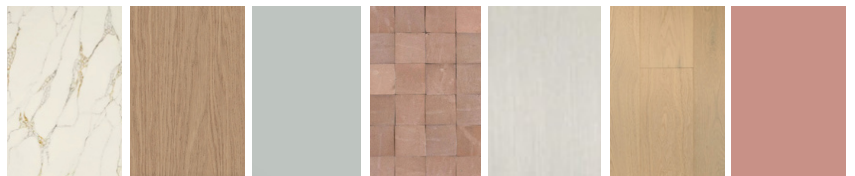


Ground Floor



Attic

MATERIALS



Topaz /
Silksurface

Boston Oak
/ Polytec

Pūkaki Half
/ Dulux

Clay zellige
blush /
Stone 3

Brushed
Nickel /
Meir

European
oak timber /
ABI Interiors

Rosy
Queen /
Dulux

AI Acknowledgement Statement

I acknowledge that I have used the following AI tool in the creation of this concept and features text.

- Chat GPT: Used to rewrite and enhance my written "concept and features" text.

I confirm that the use of the AI tool(s) has been in accordance with the Torrens University Academic Integrity Policy and TUA, Think, and MDS's Position Paper on the use of AI. I confirm that the final output is authored by me and represents my own thoughts and critical analysis. I take full responsibility for the final content of assessment 3 and 4.